

CERTIFICATE OF LOCATION OF GOVERNMENT CORNER

NORTHWEST Corner of Section 1, Township 107N, Range 40W

5th Principal Meridian, State of Minnesota, County of MURRAY

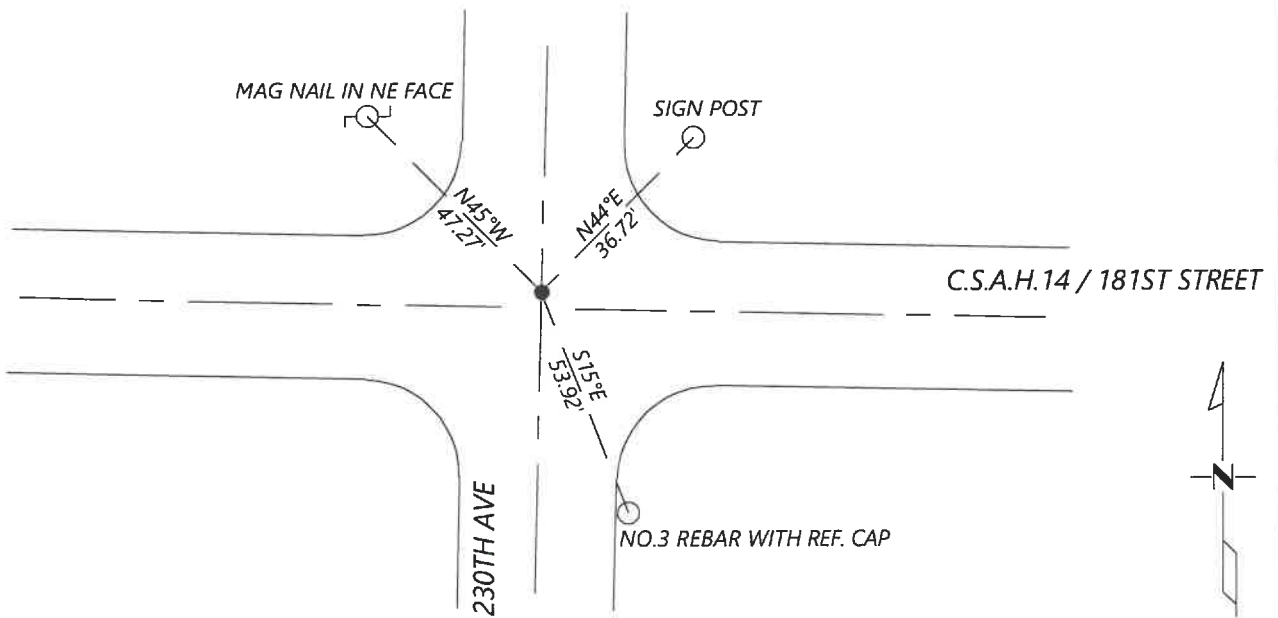
At the corner location shown on the sketch:

On 8/26/2020 found a NO. 8 REBAR WITHOUT CAP DOWN 0.6FT
DATE

left monument as found lowered monument removed monument (explain)

On _____ placed a _____
DATE

SKETCH OF REFERENCE TIES



N.T.S.

Statement of evidence for this corner location is on back of this page.

I hereby certify that this document was researched and prepared by me or under my direct supervision and that I am a licensed Land Surveyor under the laws of the State of Minnesota.

Signature [Handwritten Signature]

Date 6/16/2021 License No. 45874

Title:

- Land Surveyor Professional Engineer
- County Surveyor County Engineer

OFFICE OF THE COUNTY RECORDER

County of Murray

I hereby certify that this document was filed in the Co.

Recorder's office at _____ M. on the _____ day of _____ A.D. 20 _____

County Recorder Karen Brown

by JUN 22 2021, Deputy

DOCUMENT NO. _____

Statement of Evidence:

Northwest Corner of Section 1, Township 107 North, Range 40 West, 5th Principal Meridian, Murray County, Minnesota.

HISTORY:

GLO - JULY, 1861

NOVEMBER 22, 1928 - SURVEY RECORD FOR SECTION 2 SHOWS A CONCRETE STONE AT THE CORNER.

APRIL 23, 1932 - SURVEY RECORD FOR SECTION 35 SHOWS A STONE IN GRADE.

JULY 21, 1989 - HWY DEPT RECORDS SHOW THAT THEY LOCATED A CONCRETE MONUMENT ABOVE A STEEL SHAFT. PLACED 1" X 11" REBAR ABOVE STEEL SHAFT.

AUGUST 27, 2013 - HWY DEPT RECORDS SHOW THAT THEY LOCATED A 3/4" REBAR AND LIST THE COORDINATES N 195148.08 E 543072.08

SEPTEMBER 2020 - WESTWOOD PROFESSIONAL SERVICES SEARCHED AND FOUND A 3/4" REBAR. COORDINATES FIT HWY DEPT DATA. ACCEPTED FOUND MONUMENT AND SET REFERENCES.

Analysis of the recovered data, field evidence and survey measurements, indicates that the monument found is the correct perpetuation of this corner. For additional information concerning this corner please contact Westwood Professional Services.